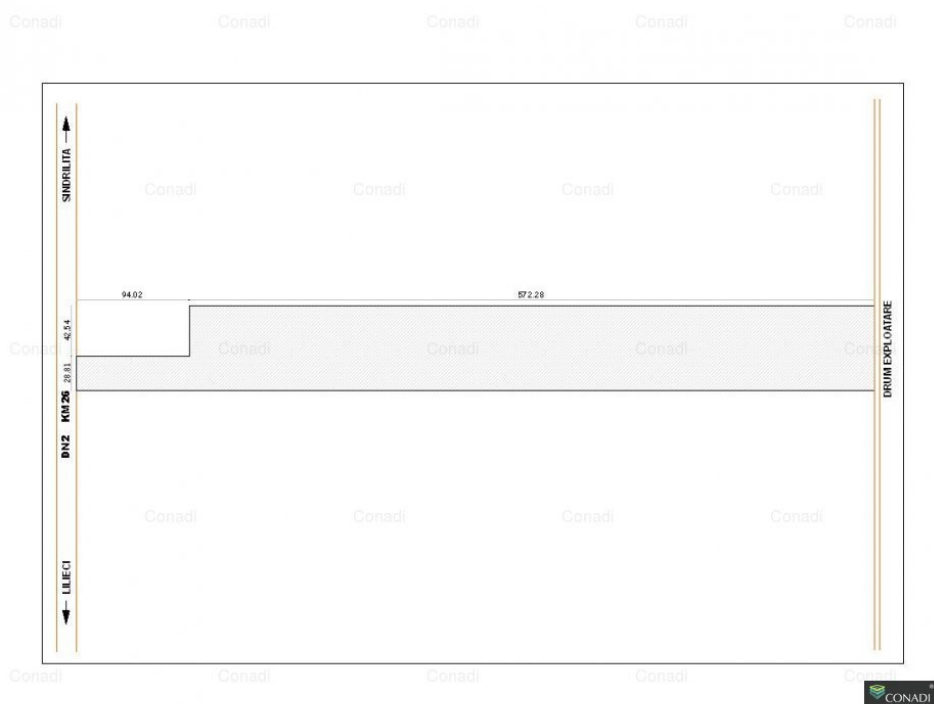


De vanzare - Teren de constructii - Extravilan

Ialomita, Sinesti

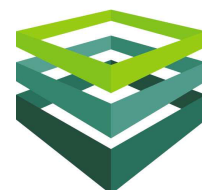
435.400 Eur



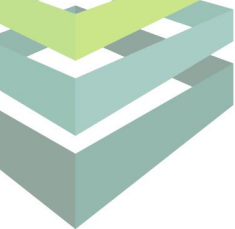
Teren de constructii - Extravilan 43.540 mp

ID: 954761

Pentru vizionare si detalii, contactati:
Sebastian Stanescu
0213104515
sebastian.stanescu@conadi.ro



www.conadi.ro



Caracteristici

Suprafata teren (mp): 43.540 mp

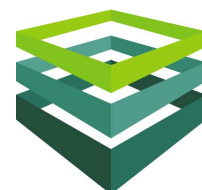
Cai de acces: 1

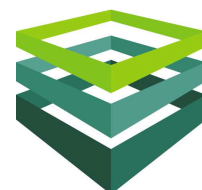
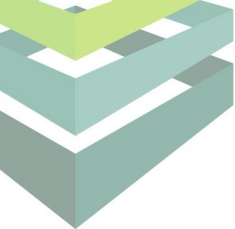
Front Stradal (m): 29 m

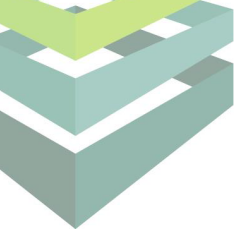
Amplasament: Extravilan

Detalii zona: strazi asfaltate

Localizare: Ialomita, Sinesti

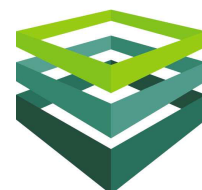


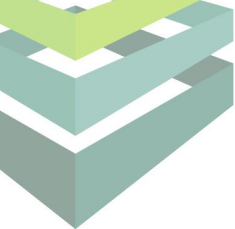




Descriere

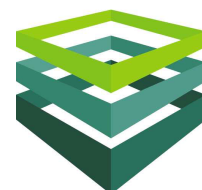
Terenul este o oportunitate de investitite pentru dezvoltare industrială. Este parcelabil cu acces direct din sosea. Pentru o linie de producție sau hala logistică acces auto este unul facil

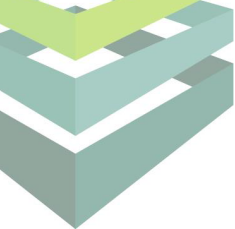




Destinatie

Recomandat pentru: comercial



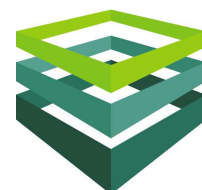


PREZENTARE COMPANIE CONADI

CONADI a fost infiintata in Bucuresti, in 1997, ca o companie privata romaneasca concentrata pe oferirea de servicii de consultanta in sectorul imobiliar.

In timp, compania s-a extins si si-a diversificat portofoliul de servicii furnizate, dezvoltand pe langa divizia de Brokeraj si Consultanta Imobiliara, pe cele de Management de Proiect, Evaluari Active, Administrare de Proprietati, Dezvoltare si Planificare, Investitii & Finantare si, nu in ultimul rand, Marketing si Comunicare, devenind astfel una dintre putinele companii care ofera **SERVICII IMOBILIARE INTEGRATE**.

Aceste servicii sunt furnizate prin intermediul unei echipe de profesionisti care stiu sa imbine spiritul antreprenorial cu o intelegere perfecta a dinamicii pietei imobiliare, toate transpunandu-se in final intr-un grad ridicat de satisfactie a clientului.





CONADI

EXCELLENCE IN REAL ESTATE

Tiriac Center, Soseaua Nordului nr. 24-26, etaj 4, Sector 1,
Bucuresti

Tel: + 40 21 310 45 15, Fax: + 40 21 310 18 67

www.conadi.ro