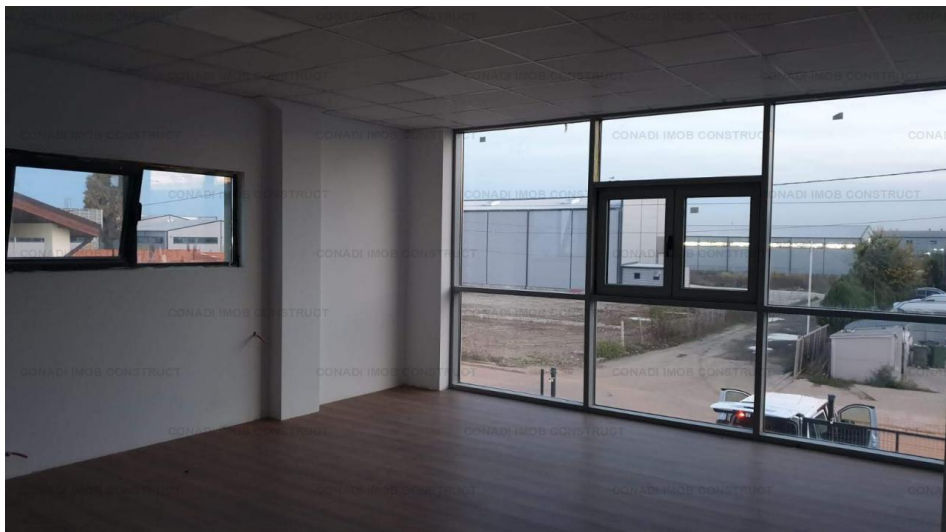


De inchiriat - Spatiu de birouri

Ilfov, Otopeni

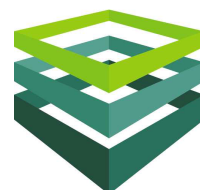
663 Eur/luna



Spatiu de birouri 2 camere, 55 mp, compartimentat, 2019, etaj 1/1

ID: 1876287

Pentru vizionare si detalii, contactati:
Sebastian Stanescu
0213104515
sebastian.stanescu@conadi.ro



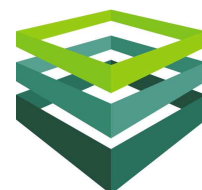
www.conadi.ro

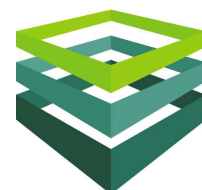
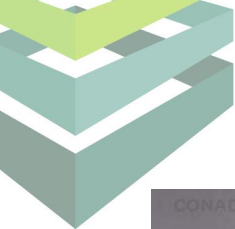


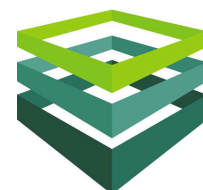
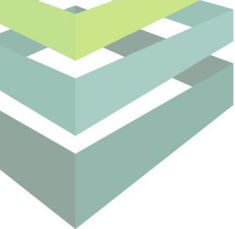
Caracteristici

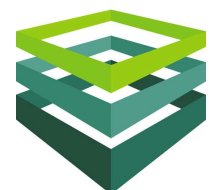
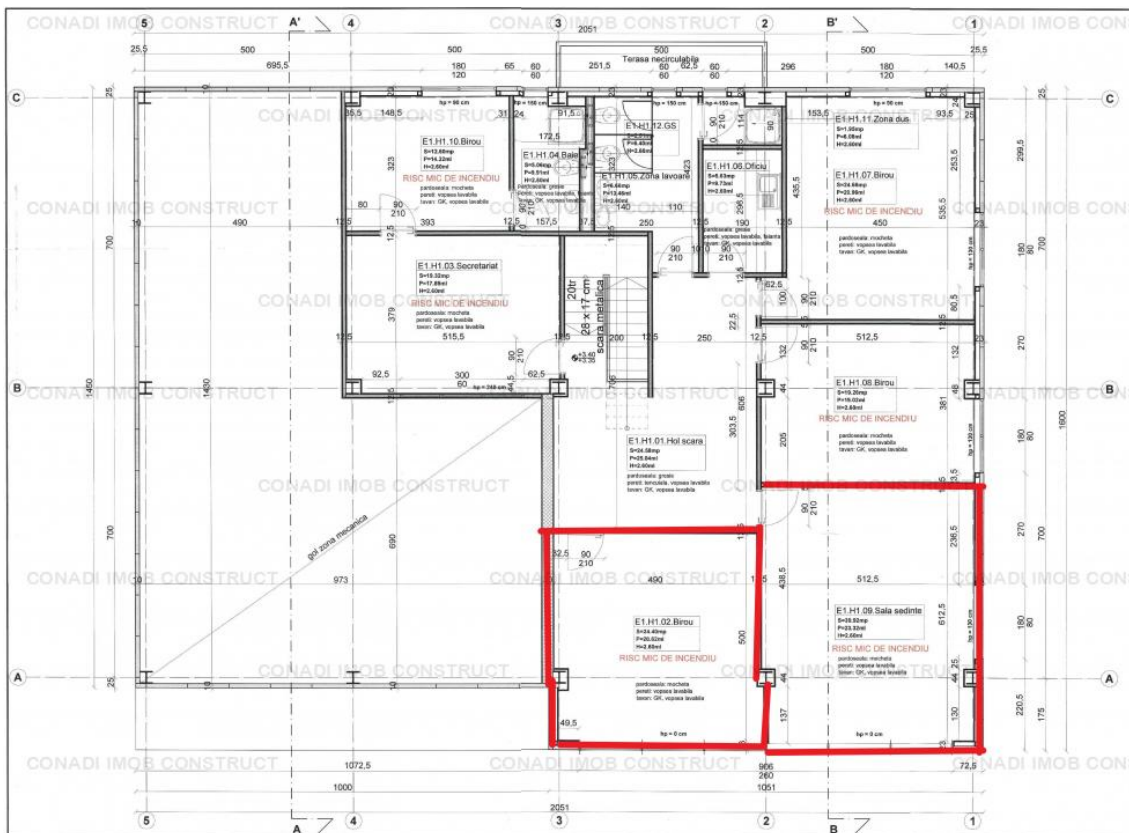
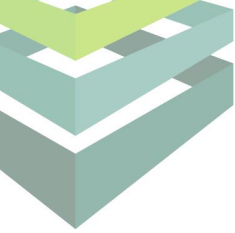
Nr. camere:	2	Confort:	Clasa B
Suprafata utila (mp):	55 mp	Etaj:	1 / 1
Suprafata construita (mp):	207 mp	Nr. bai:	1
An constructie:	2019	Nr. bucatarii:	1
Stadiu constructie:	finisat	Nr. locuri de parcare:	10
Structura:	metal	Utilizare Anterioara:	birouri
Compartimentare:	compartimentat		

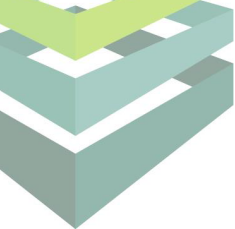
Localizare: Ilfov, Otopeni











Descriere

Sunt doua birouri disponibile care se pot inchiria impreuna sau separat.

Unul are 30.92mp si altul 24.4mp.

Se plateste la comun consumul utilitatilor si procentual cota parte de parti comune.

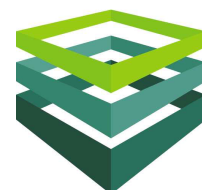
Doua luni garantie.

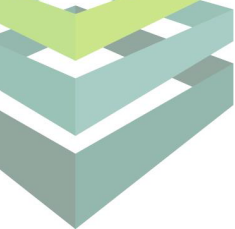
Plata chiriei se face tot timpul cu o luna in avans.

Este prima inchiriere, spatiul este de curand receptionat.

80 EUR+TVA costul unui loc de parcare

Chiria este usor negociabila.





Utilitati

General: curent electric, apa, telefon, canalizare

Internet: fibra optica

Finisaje

Stare Interior: finisat clasic

Usa Intra: metal

Pardoseala: parchet, gresie

Pereti: vopsea lavabila, faianta

Dotari

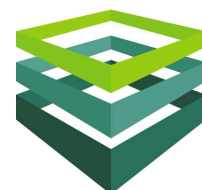
Alte spatii: wc serviciu

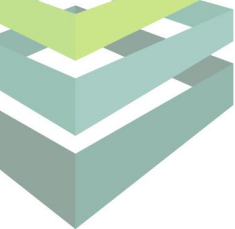
Statut juridic

Statut juridic: cadastru, ipotecat, intabulare

Destinatie

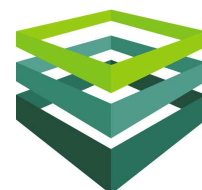
Recomandat pentru: birouri

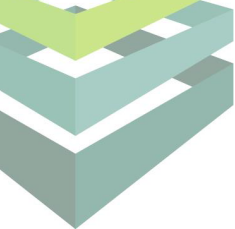




Birouri in imobil cu destinatia service auto

Etaj:	1
Suprafata (mp):	55.32 mp
Disponibil:	Disponibil imediat
Suprafata divizibil minim (mp)	24.4 mp
Parcare:	posibilitate parcare
Alte costuri:	Utilitati/Mentenanta
Pret:	10 EUR / mp /luna + TVA
Pret mentenanta:	1 EUR / mp /luna + TVA
Descriere:	<p>Sunt doua birouri disponibile care se pot inchiria impreuna sau separat. Unul are 30.92mp si altul 24.4mp. Se plateste la comun consumul utilitatilor si procentual cota parte de parti comune. Doua luni garantie. Plata chiriei se face tot timpul cu o luna in avans. Este prima inchiriere, spatiul este de curand receptionat. 80 EUR+TVA costul unui loc de parcare Chiria este usor negociabila.</p>



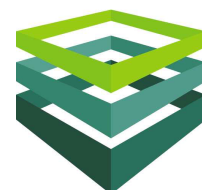


PREZENTARE COMPANIE CONADI

CONADI a fost infiintata in Bucuresti, in 1997, ca o companie privata romaneasca concentrata pe oferirea de servicii de consultanta in sectorul imobiliar.

In timp, compania s-a extins si si-a diversificat portofoliul de servicii furnizate, dezvoltand pe langa divizia de Brokeraj si Consultanta Imobiliara, pe cele de Management de Proiect, Evaluari Active, Administrare de Proprietati, Dezvoltare si Planificare, Investitii & Finantare si, nu in ultimul rand, Marketing si Comunicare, devenind astfel una dintre putinele companii care ofera **SERVICII IMOBILIARE INTEGRATE**.

Aceste servicii sunt furnizate prin intermediul unei echipe de profesionisti care stiu sa imbine spiritul antreprenorial cu o intelegere perfecta a dinamicii pietei imobiliare, toate transpunandu-se in final intr-un grad ridicat de satisfactie a clientului.





CONADI

EXCELLENCE IN REAL ESTATE

J.W. Marriott Grand Offices, etaj 6

Calea 13 Septembrie nr. 90, sector 5, Bucuresti

Tel: + 40 21 310 45 15, Fax: + 40 21 310 18 67

www.conadi.ro