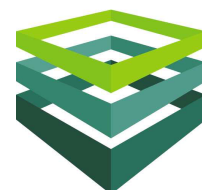


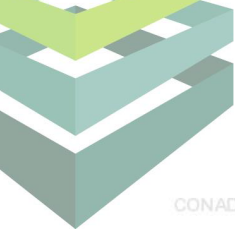


Caracteristici

Suprafata teren (mp):	4.500 mp	Amplasament:	Intravilan
Cai de acces:	1	Detalii zona:	strazi de pamant
Front Stradal (m):	12 m		

Localizare: Ilfov, Branesti





CONADI IMOB CONSTRUCT

CONADI IMOB CONSTRUCT

CONADI IMOB CONSTRUCT

CONADI

2. SCHITĂ TOPOGRAFICĂ

SCARA 1:2000

T 118; P 488/131 (FOȘTĂ P 488/148); S=4500 mp

CONADI IMOB CONSTRUCT

CONADI IMOB CONSTRUCT

CONADI IMOB CONSTRUCT

CONADI

CONADI IMOB CONSTRUCT

CONADI IMOB CONSTRUCT

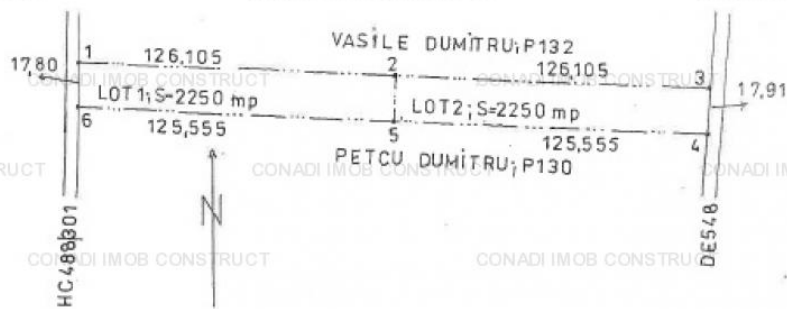
CONADI IMOB CONSTRUCT

CONADI IMOB CONSTRUCT

CONADI IMOB CONSTRUCT

CONADI IMOB CONSTRUCT

CONADI



EXPERT TEHNIC JUDICIAR
FLOREA FLORIN-ADRIAN
SPECIALITATE: TOPOGRAFIE,
CADASTRU ȘI GEODEZIE

CONADI IMOB CONSTRUCT

CONADI IMOB CONSTRUCT

CONADI IMOB CONSTRUCT

CONADI

CONADI IMOB CONSTRUCT

CONADI IMOB CONSTRUCT

CONADI IMOB CONSTRUCT

CONADI

3. SCHITĂ TOPOGRAFICĂ

SCARA 1:2000

T 144; P 576/84; S=11894 mp

CONADI IMOB CONSTRUCT

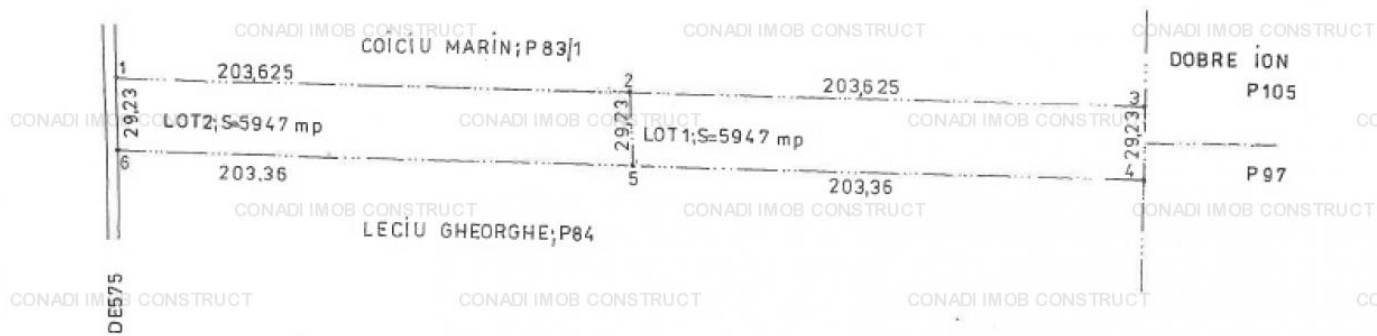
CONADI IMOB CONSTRUCT

CONADI IMOB CONSTRUCT

CONADI IMOB CONSTRUCT

CONADI IMOB CONSTRUCT

CONADI



EXPERT TEHNIC JUDICIAR
FLOREA FLORIN-ADRIAN
SPECIALITATE: TOPOGRAFIE,
CADASTRU ȘI GEODEZIE

CONADI IMOB CONSTRUCT

CONADI IMOB CONSTRUCT

CONADI IMOB CONSTRUCT

CONADI

CONADI IMOB CONSTRUCT

CONADI IMOB CONSTRUCT

CONADI IMOB CONSTRUCT

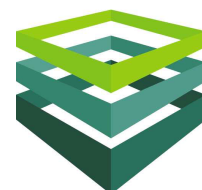
CONADI

CONADI IMOB CONSTRUCT

CONADI IMOB CONSTRUCT

CONADI IMOB CONSTRUCT

CONADI





Descriere

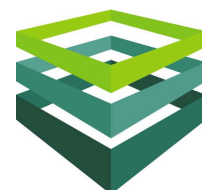
Sunt 3 terenuri :

T 118 P 488 -> 4500mp ; deschidere 18m; intre autostrada si calea ferata;

T 144 P 576 -> 1189mp ; deschidere 29m; dupa autostrada la sud

T 103 P 400 -> 594mp ; deschidere 9m;

Terenurile sunt in extravilanul localitatii Branesti.





Utilitati

General: curent electric, apa

Vecinatati

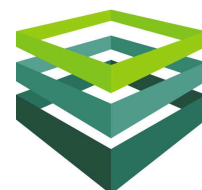
Vecinatati: transport public, scoala generala, farmacie

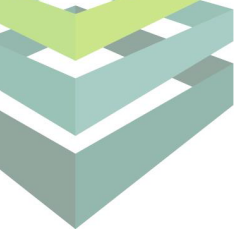
Statut juridic

Statut juridic: mostenire

Destinatie

Recomandat pentru: spatiu logistic, spatiu industrial, investitie



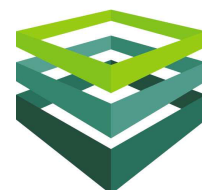


PREZENTARE COMPANIE CONADI

CONADI a fost infiintata in Bucuresti, in 1997, ca o companie privata romaneasca concentrata pe oferirea de servicii de consultanta in sectorul imobiliar.

In timp, compania s-a extins si si-a diversificat portofoliul de servicii furnizate, dezvoltand pe langa divizia de Brokeraj si Consultanta Imobiliara, pe cele de Management de Proiect, Evaluari Active, Administrare de Proprietati, Dezvoltare si Planificare, Investitii & Finantare si, nu in ultimul rand, Marketing si Comunicare, devenind astfel una dintre putinele companii care ofera **SERVICII IMOBILIARE INTEGRATE**.

Aceste servicii sunt furnizate prin intermediul unei echipe de profesionisti care stiu sa imbine spiritul antreprenorial cu o intelegere perfecta a dinamicii pietei imobiliare, toate transpunandu-se in final intr-un grad ridicat de satisfactie a clientului.





CONADI

EXCELLENCE IN REAL ESTATE

J.W. Marriott Grand Offices, etaj 6

Calea 13 Septembrie nr. 90, sector 5, Bucuresti

Tel: + 40 21 310 45 15, Fax: + 40 21 310 18 67

www.conadi.ro